



KITS



PUMPS



METERS



METERED NOZZLES



NOZZLES


 WASTE OIL
 EQUIPMENTS

K200

FEATURES

- LOW FLOW RATE OPERATION
- CONSUMPTION MONITORING
- SMALL SIZE
- INLET FILTER
- DOSAGE SYSTEM
- HIGH PRESSURE RESISTANCE
- CALIBRATION FUNCTION
- COMPACT DESIGN

The PIUSI K200 meter is an oval gear meter suitable for measuring diesel, oil and grease. Its low flow rate count makes it also applicable to measure the fuel consumption in a system.

PERFORMANCE

UP TO

2,8 L/MIN

FLOW RATE

550 BAR

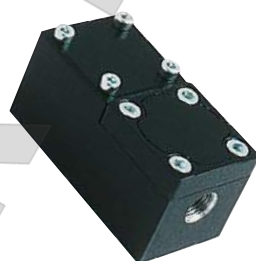
OPERATING PRESSURE

± 0,5 %

ACCURACY

0,2%

REPEATABILITY


K200 METER

K200 PULSER

K200 HP PULSER

PACKAGING

CODE	WEIGHT		PACKAGING			
	KG	LBS	MM	INCH	PCS/PALLET	PCS/BOX

METERS

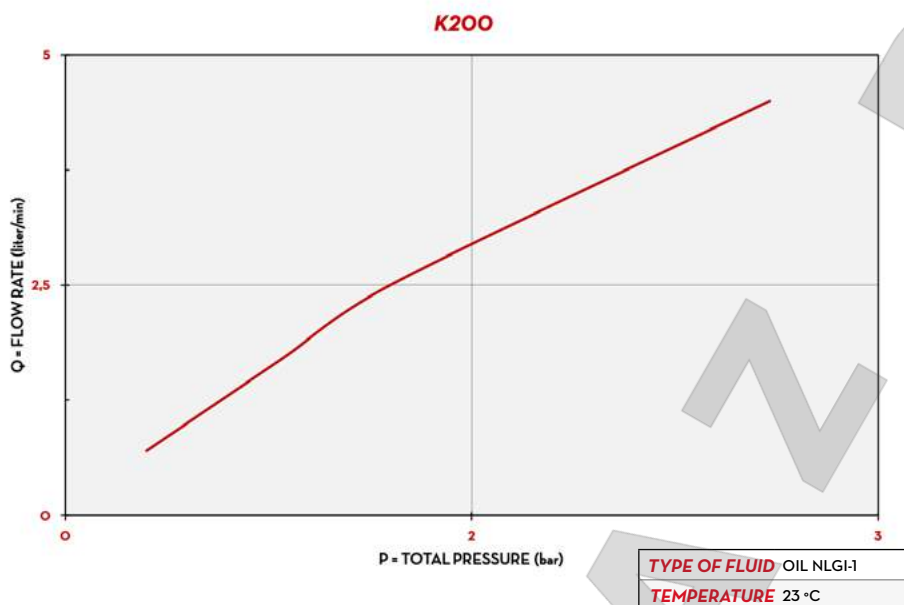
FOO43012A	0,6	1,3	130X65X108	5,1X2,6X4,3		1
FOO43011A	0,5	1,1	130X65X108	5,1X2,6X4,3		1
FOO430230	0,83	1,8	140X110X70			1

PULSER

OOO452030	0,6	1,3	130X65X108	5,1X2,6X4,3		1
OOO452000	0,5	1,1	130X65X108	5,1X2,6X4,3		1
FOO452060	0,77	1,7	140X110X70	2,5X4,3X2,7		1



CHART



IN THE BOX

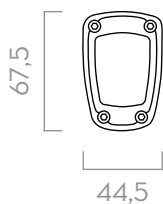
- K200 METER
- INSTRUCTION MANUAL

DETAILS

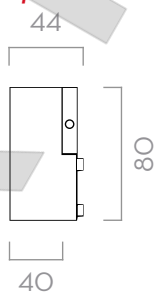


DIMENSIONS

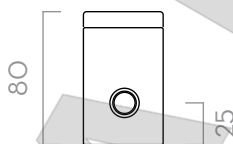
K200 FRONT
K200 HP pulser FRONT



K200 pulser SIDE



K200 SIDE
K200 HP pulser BOTTOM



K200 pulser BOTTOM



Dimensions expressed in millimeters

MATERIALS

- BODY: ALLUMINIUM
- GEARS: TECHNOPOLYMER

TECHNICAL DATA

CODE	DESCRIPTION	FLUIDS TYPE	FLOW RATE		WORKING PRESSURE		BATTERIES INCLUDED AAA NO.2 2 X 1.5 V	INLET OUTLET
			KG/MIN	LB/MIN	BAR	PSI		
METERS								
FOO43012A	K200 METER ML/L 1/8" BSP		0,1 - 2,5	0,2 - 5,5	500	7200	YES	1/8" BSP
FOO43011A	K200 METER GR/KG 1/8" BSP		0,1 - 2,5	0,2 - 5,5	550	7200	YES	1/8" BSP
FOO430230	K200/2 METER GR/KG 1/4" BSP		0,2 - 5	0,4 - 11	700	10000	YES	1/4" BSP
PULSER								
OOO452030	K200 PULSER HP 1/8" BSP		0,1 - 2,5	0,2 - 5,5	1000	14500	NO	1/8" BSP
OOO452000	K200 PULSER 1/4" BSP		0,1 - 2,5	0,2 - 5,5	30	426	NO	1/4" BSP
FOO452060	K200/2 PULSER 1/4" BSP		0,2 - 5	0,4 - 1,1	700	10000	NO	1/4" BSP

UPON REQUEST AVAILABLE IN NPTF VERSION AND DISPLAY IN GALLON/QUARTER OR PINT