



EXGO!

FEATURES

- CONTINUOUS DUTY
- COMPACT AND STURDY DESIGN
- EASY TO INSTALL
- BUILT-IN BYPASS
- THERMAL PROTECTION
- REDUCED NOISE LEVEL
- SELF-PRIMING

The PIUSI EX GO! is a compact and sturdy ATEX vane pump; expressly engineered to work safely in potentially explosives atmosphere. As the name says, this continuous duty DC pump is easy to place thanks to the small sizes and represents the ideal solution for small mobile tanks thanks to the remote control (on/off switch) and long cables (5mt EXGO! Switch - 3mt EXGO! without Switch). It can be used to dispense several fluids: Gasoline and E15, Diesel, Paraffinic Biodiesel. It is equipped with built-in bypass valve and a thermal protected motor.

PERFORMANCE

UP TO 32 L/MIN	0,8 BAR/1,2 BAR
FLOW RATE	WORKING PRESSURE/ MAX OPERATING PRESSURE
DC 12V VOLTAGE	CONTINUOUS DUTY
POWER	



EXGO! 12V DC ATEX SWITCH



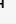
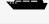
EXGO! 12V DC ATEX



OUR PUMPS COMPLIES WITH THE FOLLOWING MARKING ATEX/IECEx
EX50 EX75 EX50 EX75

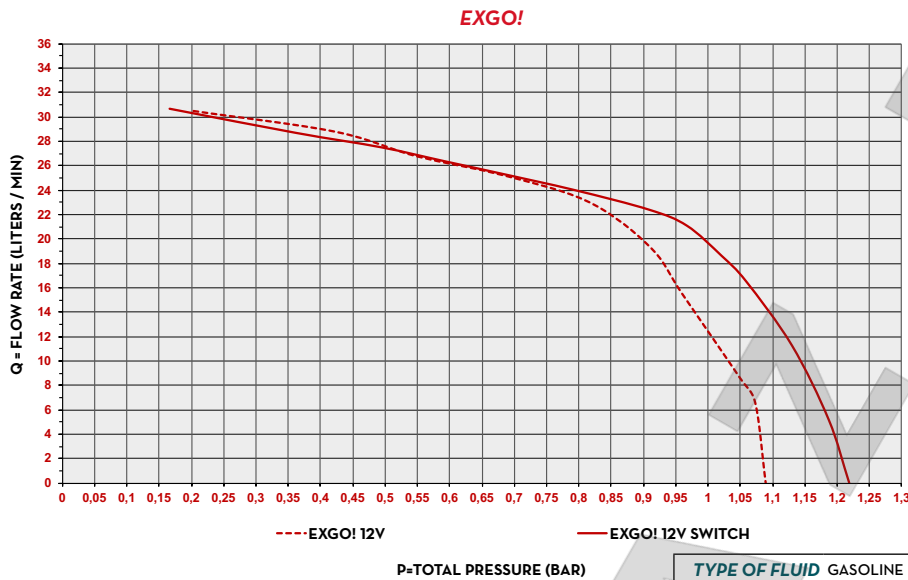
II	2	G	Ex	d	db	IIA	IIB	T4	Gb
GROUP	CATEGORY	TYPE OF EXPLOSIVE ATMOSPHERE	PERMANENT PREFIX	PROTECTION METHOD		GAS GLASS		TEMPERATURE CLASS	EQUIPMENT PROTECTION LEVEL

PACKAGING

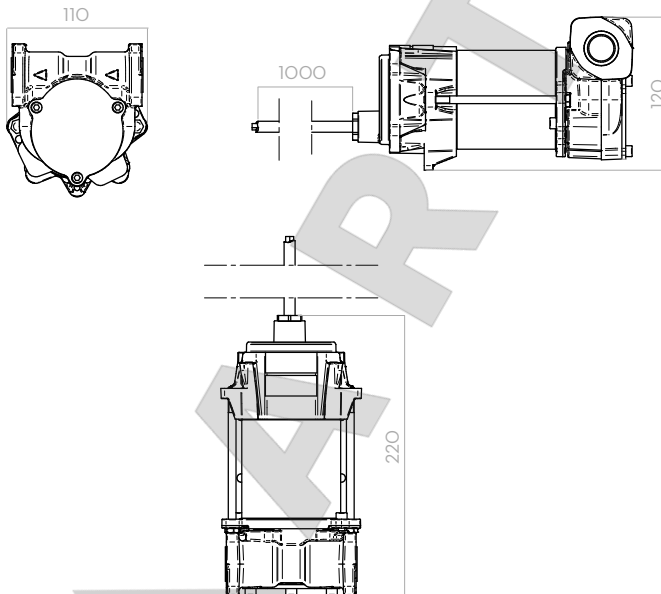
CODE	WEIGHT		PACKAGING			N. BOX / EUROPALLET	
	KG	LBS	MM	INCH	PCS/BOX		
FO0381020	5,43	12	280X160X140	-	1	-	-
FO0381500	5,43	12	280X160X140	-	1	-	-



CHART



DIMENSIONS

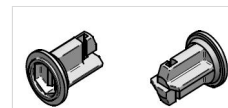


Dimensions expressed in millimeters

IN THE BOX

- EXGO!
- INSTRUCTION MANUAL

DETAILS



BUILT-IN BY-PASS VALVE



SWITCH ON/OFF



ELECTRIC CABLE WITH CLAMPS

MATERIALS

- BODY: CAST IRON
- ROTOR: SINTERED STEEL
- VANES: PPS
- SEAL: FKM
- SHAFT: STEEL

TECHNICAL DATA

CODE	DESCRIPTION	FLUIDS TYPE	FLOW RATE		VOLTAGE			DUTY CICLE	RPM	INLET	OUTLET
			L/MIN	GPM	AC VOLT/Hz	POWER WATT	AMP. MAX.	CONTINUOUS		BSP	
FO0381020	(EX) EXGO! 12V DC ATEX SWITCH	D G K	32	8,5	12	84	10A	YES	1400	3/4"	3/4"
FO0381500	(EX) EXGO! 12V DC ATEX	D G K	32	8,5	12	84	10A	YES	1400	3/4"	3/4"