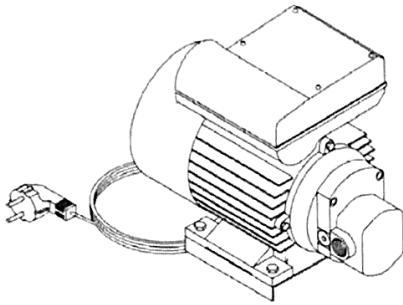


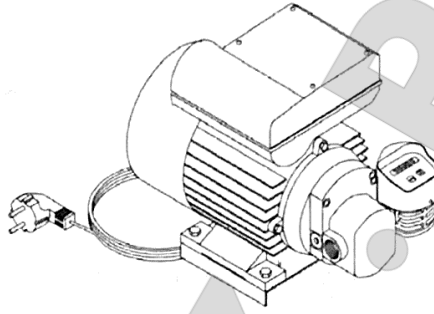
EA-88 0.74 kW 230 V

CODE 03070

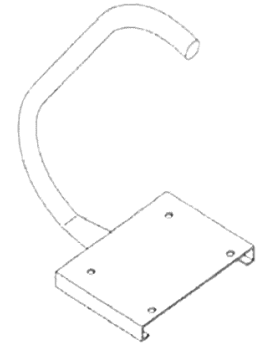
INSTRUCTION MANUAL WARRANTY AND CONFORMITY DECLARATION



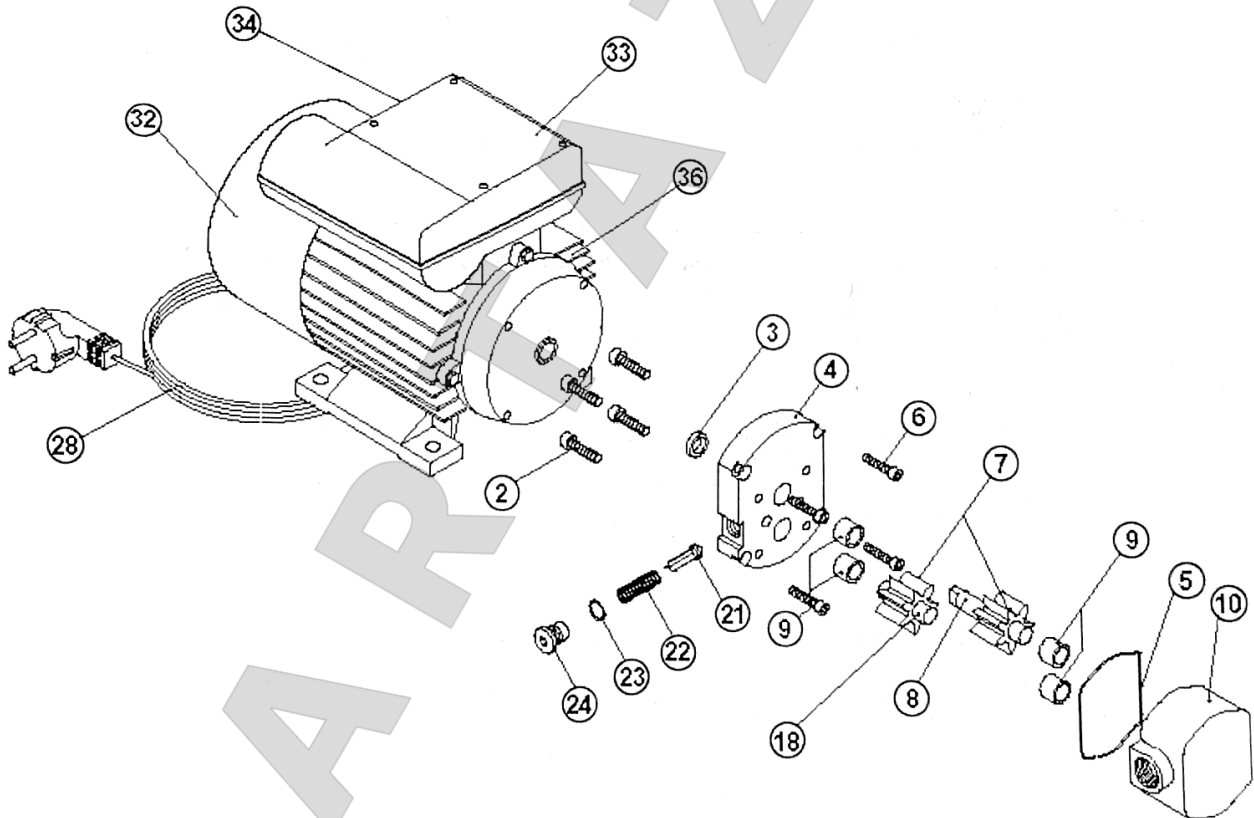
EA-88 0,74 kW · code 03070
 Weight: 13,2 kg (approx.)
 Size: 290x190x200 mm (approx.)



SEA-88 0,74 kW · code 31202
 Weight: 13,9 kg (approx.)
 Size: 330x280x200 mm (approx.)



OPTIONAL: code 030003001



N°	DESCRIPTION	CODE
2	SCREW M-6x25 DIN. 912	805400007
3	RETAINER 12.37x17.61x2.62	804600101
4	ALUMINIUM COVER	030001016
5	PUMP BODY JOINT 56 x 2	803100021
6	SCREW M-5x25 DIN. 912	805400006
7+8	DRIVE SHAFT Ø12x64.5 + GEAR	030002020
9	BUSH Ø12x16x12	030002014
10	BRASS PUMP BODY	030002001
18	LAYSHAFT Ø12x42 + GEAR	030002019
21	WHITE BY-PASS VALVE 10.5x35	805606104

N°	DESCRIPTION	CODE
22	11x12x38 BY-PASS SPRING	030702005
23	D.13x2 NBR JOINT	803100132
24	SPECIAL BY-PASS BULL PLUG 3/8"	030002108
28	230 VAC (3 m) CONNECTION CABLE WITH INJECTED PLUG	800900010
30	CONDENSER 32 µF/450 VAC	802000005
32	VENTILATOR COVER	030701102
33	CONNECTION BOX	030701103
34	ON/OFF IP-55 SWITCH	030001404
35	VENTILATOR	030701105
36	MOTOR 0.74 kW WITH THERMAL PROTECTION	030702001

1. TECHNICAL FEATURES

- FA-88 0.74 kW Self-suction Gear Pump

IMPORTANT:

EA-88 0.74 kW 230 V INSTRUCTION MANUAL

- Pump shaft: steel
- Pump gears: Straight steel teeth
- Free flow: 20-25 l/min (SAE 20/50W at 25 °C)
- It has recirculation by-pass valve.
- Motor: 0.74 kW Self-ventilated. 230 VAC 50/60 Hz Single-phase
- Level noise: $L_{EQA} < 85$ dBA (1 m)
- IP-55 Protection
- Motor equipped with thermal protection
- 1,500 rpm
- By-pass pressure: 9-10 bar
- Consumption: 4-6 A
- Inlet/Outlet tube: 1/2" GAS (BSP)
- ON/OFF Switch
- 230 VAC (3 m) connection cable with injected plug

2. WARNINGS

Please read all the instructions carefully before using the product. The people who do not know the instructions must not use it.

This manual describes how to use the machine according to the project hypothesis, the technical features, the types of installation, the use, the maintenance and the training regarding to possible dangers.

The instruction manual must be considered as a part of the pump and keep it for future inquiries during all its working life. We suggest keeping it in a dry and protected place.

The manual reflects the technical situation in the pump sale and cannot be considered inadequate for the reason of being updated afterwards according to the new experiences. The manufacturer reserves the right to update the production and the manuals without being forced to update the production and previous manuals.

3. SECURITY INSTRUCTIONS

To use this pump without suffering any danger it is essential to read and follow each one of the warnings and following cautions:

3.1. PLEASE FOLLOW ALL THE INSTRUCTIONS CAREFULLY. The pump must be connected adequately up the ground and must use cables and suitable pipes.

3.2. The broken-down motors must be repaired in an authorized workshop or in our factory.

3.3. IMPORTANT



It is forbidden to use the pump in environments where there can be the possibility of suffering an explosion or fire light (established by the Law). In particular the pump must not be used to pump liquids that, according to the Law, need explosionproof motors, some examples of usage completely not allowed are with petrol, acetone, dissolvent etc. (Rule references: international law IEC 79-10). Do not smoke near the pump or use it near a flame. This could cause an explosion and even the death.

3.4. It is advisable to install a special oil filter in the suction to avoid solid impurities sinking in the pump and/or the meter. The absence of these impurities means the long-life of the pump.

3.5. The EA-88 0.74 kW and SEA-88 0.74 kW pumps are tested in a self-suction of 2.5 m in depth. At major depth, with or without meter, it is advisable to install a retention valve with filter. The retention valve must be suitable for oil.

3.6. The installed hoses in any of our pumps must have the same diameter as or larger than the admission holes and pump outlet, that is the minimum diameter must be 1/2" GAS (BSP) or 15 mm inside.

3.7. In any case and for a suction height higher than 2.5 m, it is necessary a suction tube larger than the admission hole of the pump that is 3/4" GAS (BSP).

3.8. In the event of closing the liquid way by the nozzle, the liquid freely runs through the bypass into the pump.



DO NOT FORGET TO STOP THE PUMP USING THE SWITCH once the refillage operation is finished.

ATTENTION: If the pump, hose, and nozzle are out in the open, in summer weather and in very hot countries, after the refillage (once the pump is stopped) it is advisable to open the nozzle to permit it to discharge the stored up pressure inside the hose. In the opposite sense, the high temperature of the sun makes possible that an overpressure is been created by the expansion due to the oil dilation contained inside the tubes, which could cause a retainer and mechanic element breaking of the pump and/or the meter.

3.9. If the pump is without operating in a place exposed to extreme cold temperatures or ice, it will be necessary to empty the hoses and the pump body. In the same way, it is advisable to make this operation if the pump remains a long time without operating (even though the temperature is being normal).

3.10. RECOMMENDATION: To avoid overpressures on the pump retainer or on the meter, it is advisable to put a check valve on the pump or meter outlet.

3.11. On the DELIVERY it is advisable to use R1 hoses; they are resistant to the pump working pressure.

3.12. NEVER LET THE PUMP WORK EMPTY. Please avoid spillage of any liquid on the motor top.

3.13. ATTENTION



The electric connections must be done according to the EN 60204-1-2-Ed Regulation. In the series version the electric motor is not equipped with the protection against electric overcharges; the assembly of this protection is in the charge of the user.

Connect the cable to the power supply after assuring that this is equal to the written values on the motor plate (it admits a tension tolerance of 10 %). The switch box of the motor has electric parts, whose assembly must be done by specialized personnel, complying with the security rules.



3.14. ATTENTION

The pump must not be turned on before completing its installation. It is absolutely forbidden to put fingers or other parts of the body inside the holes: the pump has moving parts. Before starting the disassemble or assembly of the pump, always place the switch on position "0" and disconnect it from the power supply to avoid accidental ignitions of the non-protected moving parts.

3.15. The EA-88 0.74 kW pumps are suitable for all type of oil supplies; they admit roller coupling of the hose on the delivery. It is necessary to equip the pump with PRESSURE SWITCH on industrial installation of oil supply.