



# PB0 50 - PB0 60 - PB0 85



DIESEL

**PB0 50****PB 060****PB0 85**

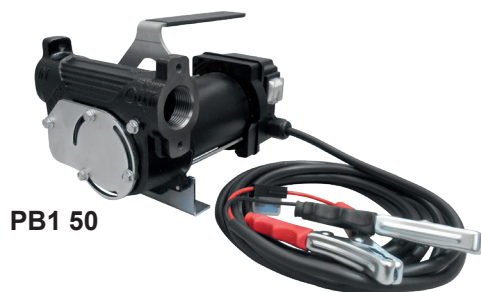
FEATURES	PB 45	PB 60	PB 85
Voltage DC [V]	12 - 24	12 - 24	12 - 24
Current max [A]	18 - 9	26 - 17	40 - 32
Power [W]	216 - 216	312 - 408	480 - 768
Fuse [A]	no	no	no
Motor protection	IP55	IP55	IP55
On/Off Switch	no	no	no
Cable [m]	no	no	no
Duty Cycle [min]	S2 30	S2 30	S2 30
Nominal Flow Rate [l/min / GPM]	50 / 13,20	60 / 15,85	85 / 22,45
Max Pressure [bar / psi]	1.2 / 17,5	2 / 29	2.4 / 35
Dry Suction height [m]:	2	2	2
Internal By-Pass	Yes	Yes	Yes
Inlet [BSP/G]	1" F	1" F	1" F
Outlet [BSP/G]	1" F	1" F	1" F
Pump body material	Cast Iron	Cast Iron	Cast Iron
Impeller material	Sintered Steel	Sintered Steel	Sintered Steel
Vanes material	POM	POM	POM
Ring material	HNBR	HNBR	HNBR
Gasket material	NBR	NBR	NBR
Internal filter	Yes	Yes	Yes
Motor support	Yes	Yes	Yes
Handle	no	no	no
Temperatura min/max [°C]	-20/+50	-20/+50	-20/+50
Max fluid viscosity [cSt] (a 40 °C):	2 ÷ 5	2 ÷ 5	2 ÷ 5
Allowed fluids	diesel	diesel	diesel
Forbidden fluids	gas, alcool, water, gasoline, kerosene		
Loudness at less 1 meter [dB]	70 - < 75	70 - < 75	70 - < 75
Net weight[kg]	4.3	7.7	7.7
Gross weight [kg]	4.7	8.2	8.2



# PB1 50 - PB1 60 - PB1 85



DIESEL



PB1 50



PB1 60



PB1 85

FEATURES	PB1 50	PB1 60	PB1 85
Voltage DC [V]	12 - 24	12 - 24	12 - 24
Current max [A]	18 - 9	26 - 17	40 - 32
Power [W]	216 - 216	312 - 408	480 - 768
Fuse [A]	30 - 15	40 - 40	40 - 40
Motor protection	IP55	IP55	IP55
On/Off Switch	Yes	Yes	Yes
Cable [m]	4	4	4
Duty Cycle [min]	S2 30	S2 30	S2 30
Nominal Flow Rate [l/min / GPM]	50 / 13,20	60 / 15,85	85 / 22,45
Max Pressure [bar / psi]	1,6 / 23,2	2 / 29	2,4 / 35
Dry Suction height [m]:	2	2	2
Internal By-Pass	Yes	Yes	Yes
Inlet [BSP/G]	1" F	1" F	1" F
Outlet [BSP/G]	1" F	1" F	1" F
Pump body material	Cast Iron	Cast Iron	Cast Iron
Impeller material	Sintered Steel	Sintered Steel	Sintered Steel
Vanes material	POM	POM	POM
Ring material	HNBR	HNBR	HNBR
Gasket material	NBR	NBR	NBR
Internal filter	Yes	Yes	Yes
Motor support	Yes	Yes	Yes
Handle	Yes	Yes	Yes
Min/Max Temperature [°C]	-20/+50	-20/+50	-20/+50
Max fluid viscosity [cSt] (a 40 °C):	2 ÷ 5	2 ÷ 5	2 ÷ 5
Allowed fluids	diesel	diesel	diesel
Forbidden fluids	gas, alcohol, water, gasoline, kerosene		
Loudness at less 1 meter [dB]	70 - < 75	70 - < 75	70 - < 75
Net weight [kg]	4.8	9.8	9
Gross weight [kg]	5.2	10.4	10

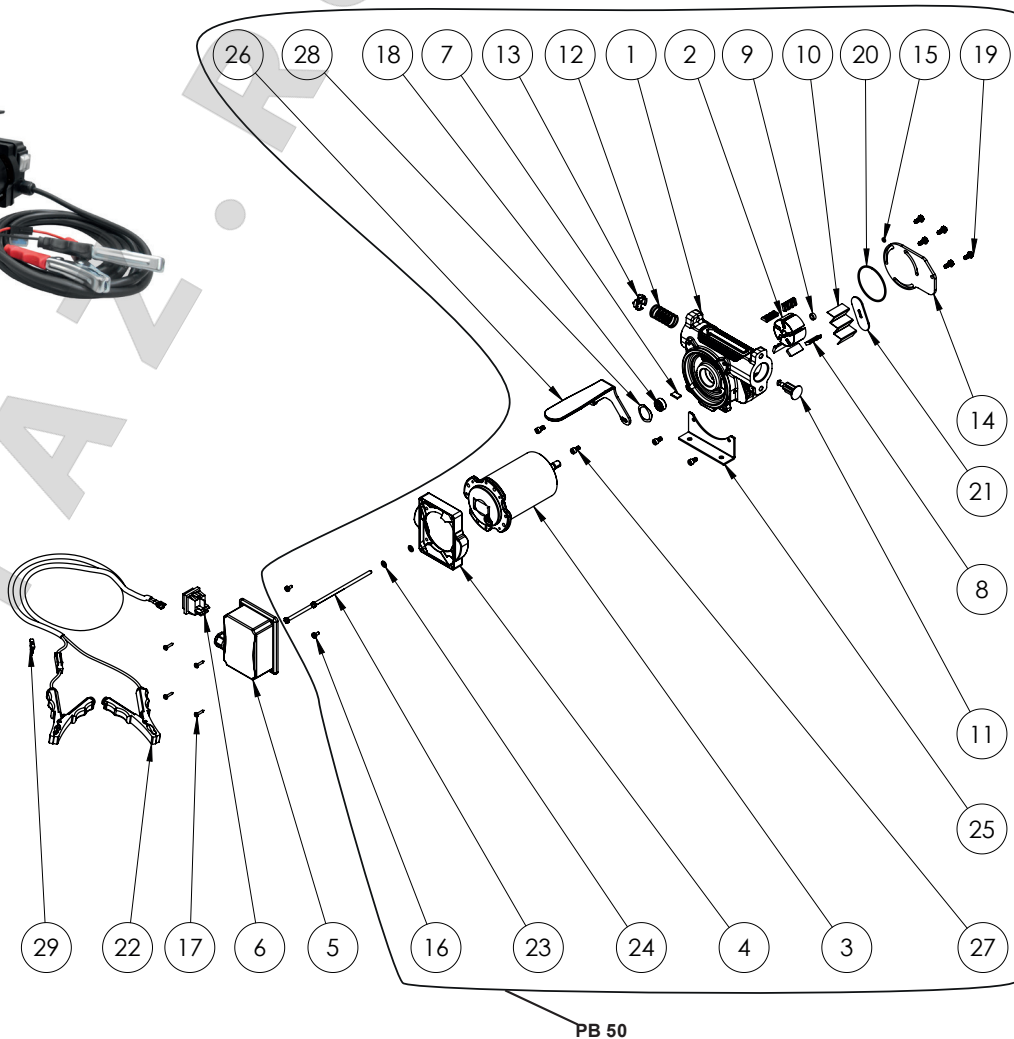


category

diesel electricpump

# PB0 - PB1 50

	12V	24V	DESCRIPTION	QTY
1	CP011X	CP011X	BODY PUMP	1
2	61000003	61000003	ROTOR Ø45	1
3	ME040	HE041	MOTOR 12V PB 50	1
4	PA017	PA017	FLANGE	1
5	PA016	PA016	CONDENSATOR BOX	1
6	190050210000	190050210000	SWITCH 22X30 + COVER	1
7	71000517	71000517	PLASTIC PIN	1
8	71000522	71000522	SMALL VANE	5
9	DC007	DC007	BUSH PA66 DE 10 DI6 H4	1
10	PA019	PA019	INOX FILTER 16X49	1
11	71000520	71000520	BY-PASS VALVE	1
12	71008006	71008006	SPRING Ø21.4X42	1
13	PA037	PA037	BYPASS CAP	1
14	PA018	PA018	SWIVEL LOCKING PLATE	1
15	11010040200	11010040200	O-RING 2015 NBR	1
16	82301410100	82301410100	SCREW TC M4 X 8	2
17	VT004	VT004	SCREW TC Ø3,5X16	4
18	12010031000	12010031000	SHAFT SEAL Ø19	1
19	VT046	VT046	SCREW TE M5X12	5
20	OR039	OR039	O-RING NBR70 57X2	1
21	OR037	OR037	FILTER SEAL	1
22	17001108	17001108	4M CABLE WITH CLAMPS	1
23	61004600000	61004600000	TIE ROD M5 X 125	2
24	83101810000	83101810000	PLATE WASHER 5X10X1	2
25	71000031	71000031	HOLDER	1
26	PB003	PB003	HANDLE	1
27	VT033	VT033	SCREW M5 X 10 (PB1 50)	4
28	VT042	VT042	COMPENSATION RING	1
29	190170130000	190170130000	FUSE	1



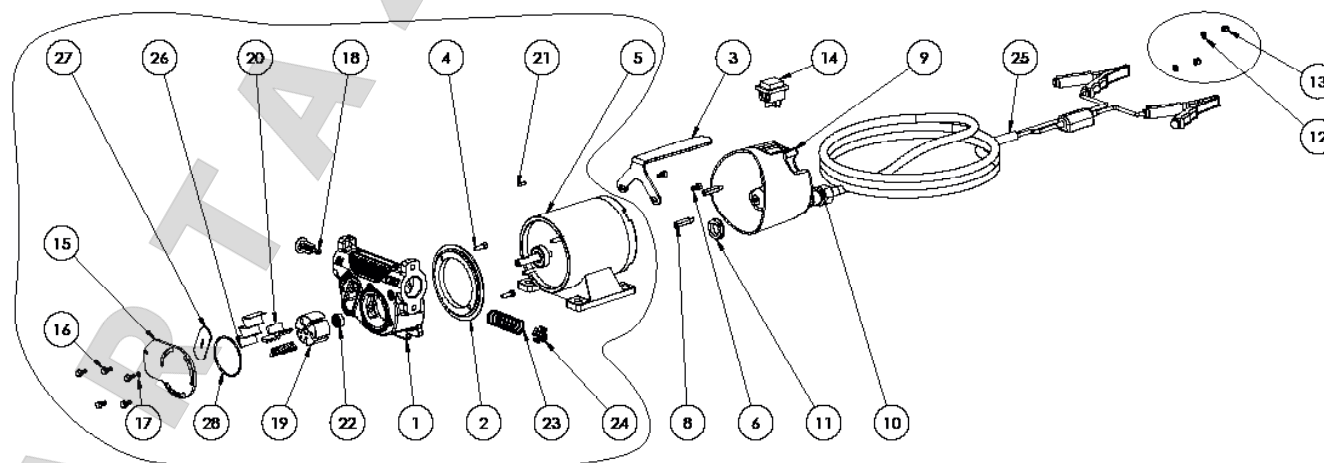


category

diesel electricpump

# PB0 - PB1 60

	CODE	DESCRIPTION	QTY
1	CP012X	PUMP BODY PB 60 LTD	1
2	PB005X	COUPLING MOTOR FLANGE PB LTD	1
3	PB003	PB PUMPS HANDLE	1
4	13001007	SCREW TCCE M5x16 ISO 4762	2
5	ME042	12V MOTOR FOR PB 60/85	1
-	ME043	24V MOTOR FOR PB 60/85	
6	VT033	SCREW T.C.E.I. M5 X 10 ZINC	2
8	VT022	HEX SPACER MF M5X25	2
9	PB001	MOTOR COVER IP55 PB1 60L	1
10	53015030	CABLE GLAND PG 13.5	1
11	53019030	CABLE GLAND NUT GMP-GL 13.5	1
12	83101810000	PLATE WASHER 5x10x1 UNI 6592	2
13	82021810000	SELF-LOCKING NUT M5 UNI 7473	2
14	190050210000	SWITCH 22X30 + COVER	1
15	PA018	SWIVEL LOCKING PLATE	1
16	VT046	SCREW TE M5X12 FLANGED UNI5541	5
17	11010040200	O-Ring 2015 NBR	1
18	71000520	BY-PASS VALVE	1
19	61000003	ROTOR Ø45	1
20	71000522	SMALL VANE	5
21	17001097	PIN 3x3x15 UNI 6604-B	1
22	12010031000	SHAFT SEAL Ø19	1
23	16001005	BY-PASS SPRING	1
24	PA037	BLACK REINFORCED BYPASS CAP	1
25	190000150000	4m CABLE WITH CLAMPS + FUSE	1
26	PA019	INOX FILTER 16X49	1
27	OR037	FILTER SEAL	1
28	OR039	O-RING NBR70 57x2 BODY PUMP	1



PB 60



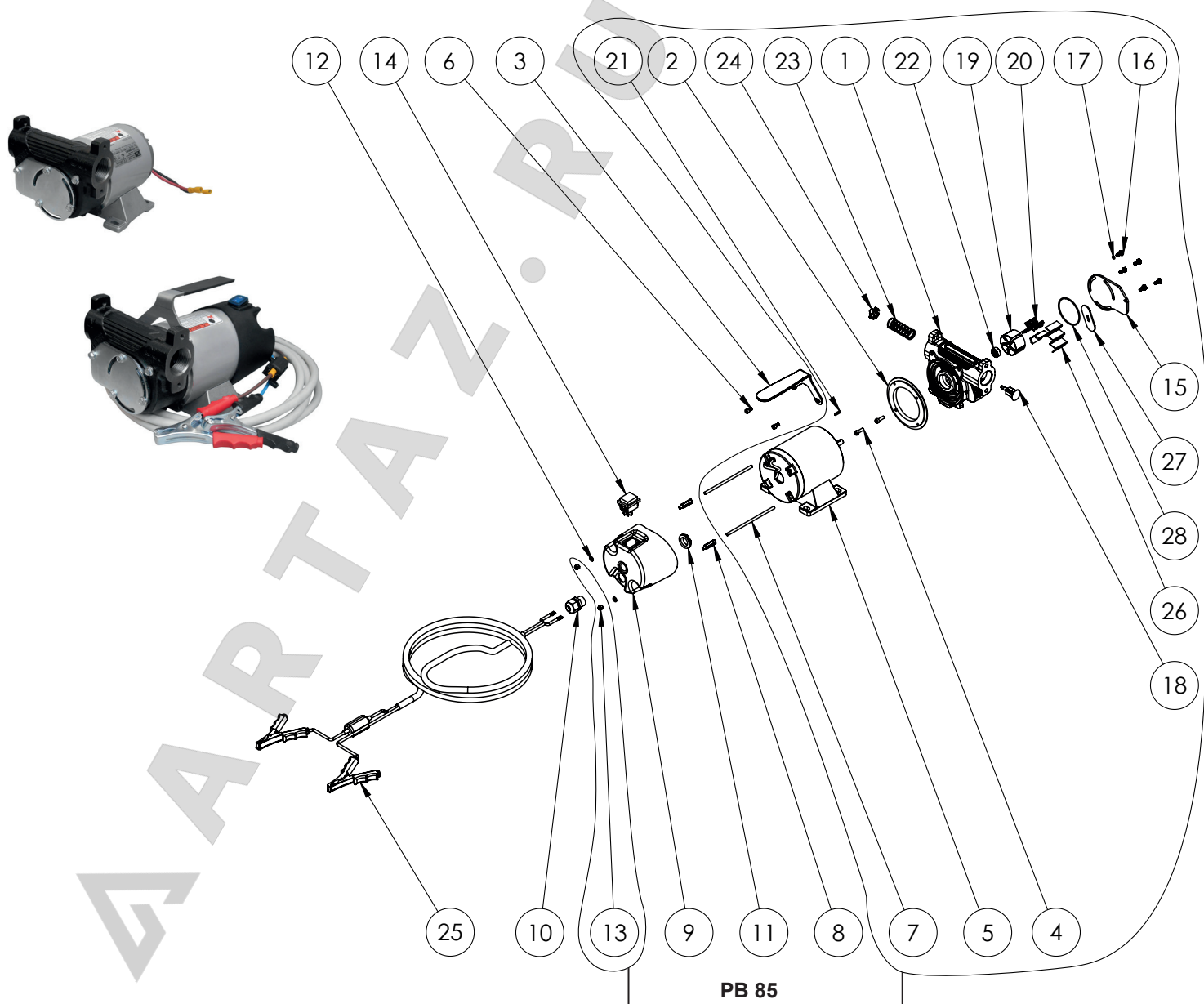


category

diesel electricpump

# PB0 - PB1 85

	CODE	DESCRIPTION	QTY
1	CP010X	PUMP BODY	1
2	PB005X	COUPLING MOTOR FLANGE	1
3	PB003	HANDLE	1
4	13001007	SCREW TCCE M5x16 ISO 4762	2
5	ME042	12V MOTOR FOR PB 60/85	1
6	VT033	SCREW T.C.E.I. M5 X 10	2
7	VT028	TIE Ø5X135 DOUBLE THREAD	2
8	VT022	HEX SPACER MF M5X25	2
9	PB001	MOTOR COVER IP55	1
10	53015030	CABLE GLAND PG 13.5	1
11	53019030	CABLE GLAND NUT 13.5	1
12	83101817100	PLATE WASHER Ø5 LARGE	2
13	82021810000	SELF-LOCKING NUT M5	2
14	190050210000	SWITCH 22X30 + COVER	1
15	PA018	SWIVEL LOCKING PLATE	1
16	VT046	SCREW TE M5X12 FLANGED	5
17	11010040200	O-Ring 2015 NBR	1
18	71000520	BY-PASS VALVE	1
19	61000003	ROTOR Ø45	1
20	71000522	SMALL VANE	5
21	17001097	PIN 3x3x15 UNI 6604-B	1
22	12010031000	SHAFT SEAL Ø19	1
23	16001005	BY-PASS SPRING	1
24	PA037	PLATE	1
25	190000150000	4m CABLE CLAMPS + FUSE	1
26	PA019	INOX FILTER 16X49	1
27	OR037	FILTER SEAL	1
28	OR039	O-RING NBR70 57x2	1

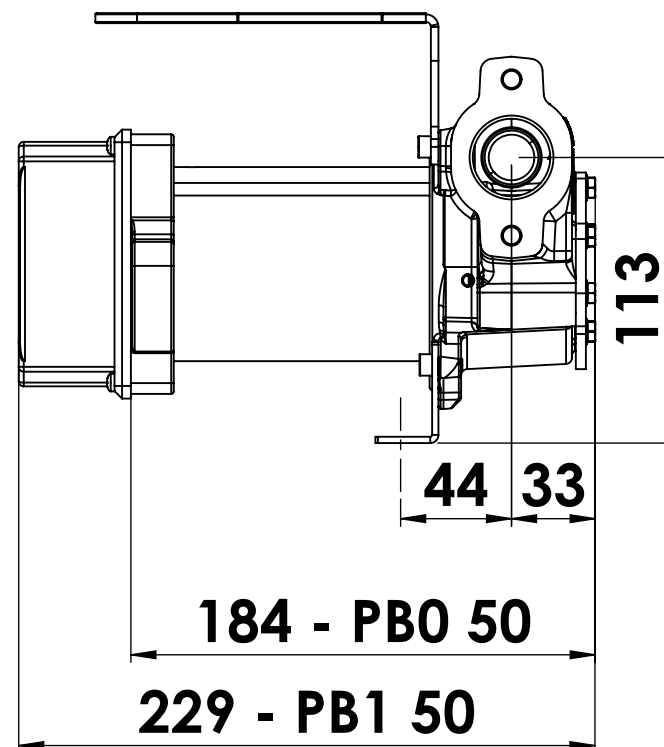
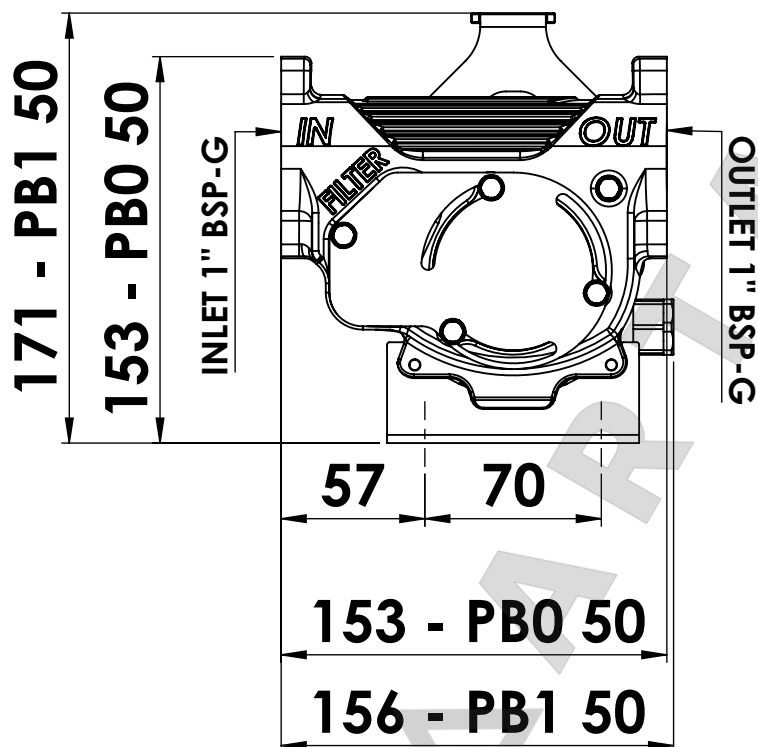




# PB0 - PB1 50L



PB0 - PB1 50



tutte le dimensioni espresse in mm - all dimensions are in mm



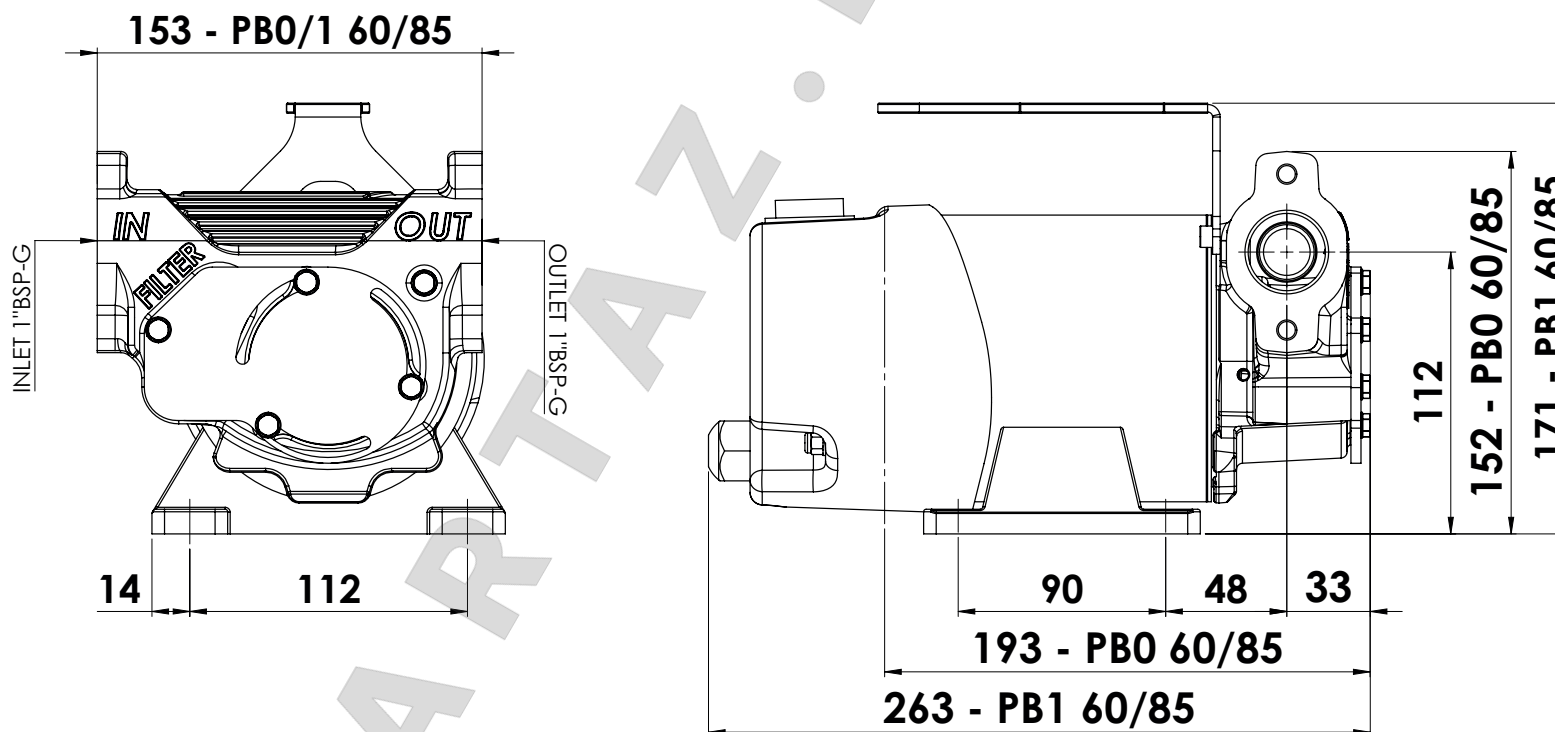
# PB0 - PB1 60L & PB0 - PB1 85L



PB0 - PB1 60



PB0 - PB1 85



tutte le dimensioni espresse in mm - all dimensions are in mm



# PB1 50



schema elettrico

wiring diagram

schaltpläne

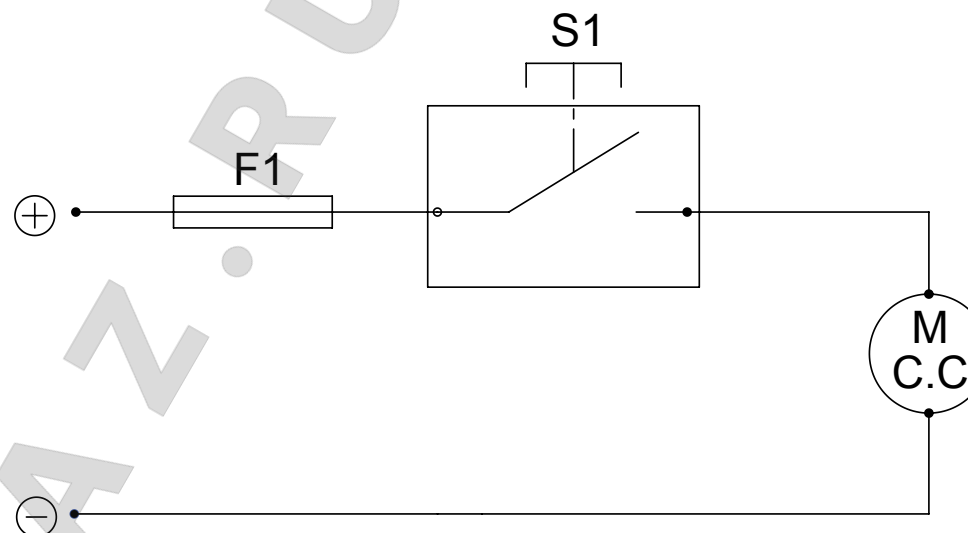
schémas électriques

esquemas eléctricos

esquemas elétricos

электрические схемы

12 / 24 VCC



S1 interruttore ON-OFF  
M: motore  
F1: fusibile

S1: interruptor ON-OFF  
M: motor  
F1: fusible

S1: ON-OFF switch  
F1: Fuse  
M: Motor

S1: Interruptor ON-OFF  
M: Motor  
F1: Fusível

S1: ON - OFF Schalter  
M: Motor  
T: Temperaturschutz

S1: переключатель ВКЛ-ВЫКЛ  
M: Двигатель  
F1: Плавкий предохранитель

S1: interrupteur ON-OFF  
M: moteur  
F1: fusible





# PB1 60



schema elettrico

wiring diagram

schaltpläne

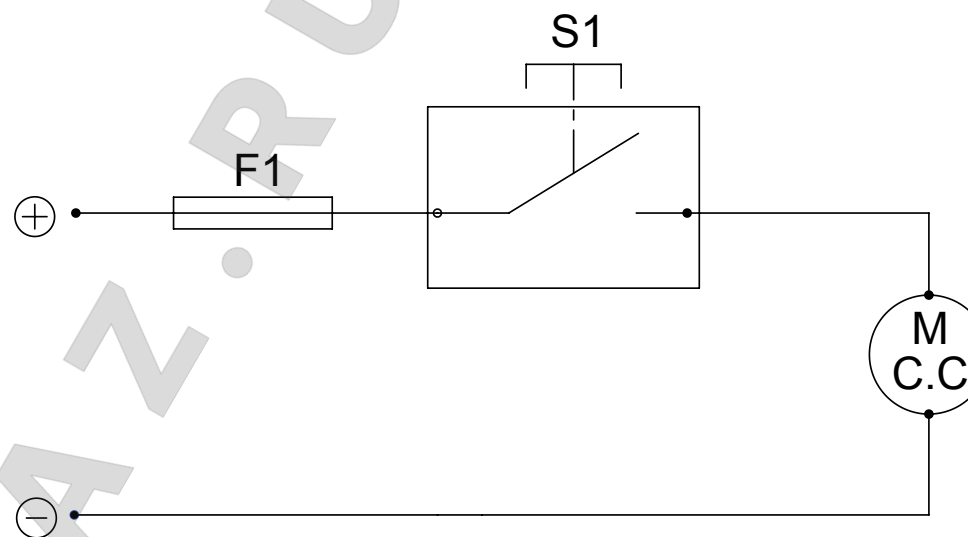
schémas électriques

esquemas eléctricos

esquemas elétricos

электрические схемы

12 / 24 VCC



S1 interruttore ON-OFF  
M: motore  
F1: fusibile

S1: interruptor ON-OFF  
M: motor  
F1: fusible

S1: ON-OFF switch  
F1: Fuse  
M: Motor

S1: Interruptor ON-OFF  
M: Motor  
F1: Fusível

S1: ON - OFF Schalter  
M: Motor  
T: Temperaturschutz

S1: переключатель ВКЛ-ВЫКЛ  
M: Двигатель  
F1: Плавкий предохранитель

S1: interrupteur ON-OFF  
M: moteur  
F1: fusible



# PB1 85



schema elettrico

wiring diagram

schaltpläne

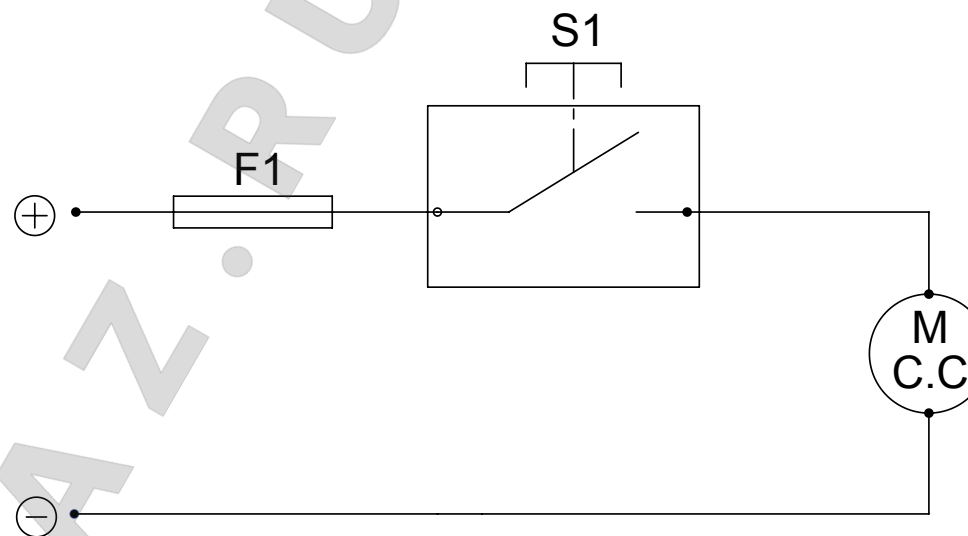
schémas électriques


esquemas eléctricos


esquemas elétricos


электрические схемы


12 / 24 VCC





 S1 interruttore ON-OFF  
M: motore  
F1: fusibile


 S1: interruptor ON-OFF  
M: motor  
F1: fusible

 S1: ON-OFF switch  
F1: Fuse  
M: Motor

 S1: Interruptor ON-OFF  
M: Motor  
F1: Fusível

 S1: ON - OFF Schalter  
M: Motor  
T: Temperaturschutz

 S1: переключатель ВКЛ-ВЫКЛ  
M: Двигатель  
F1: Плавкий предохранитель

 S1: interrupteur ON-OFF  
M: moteur  
F1: fusible



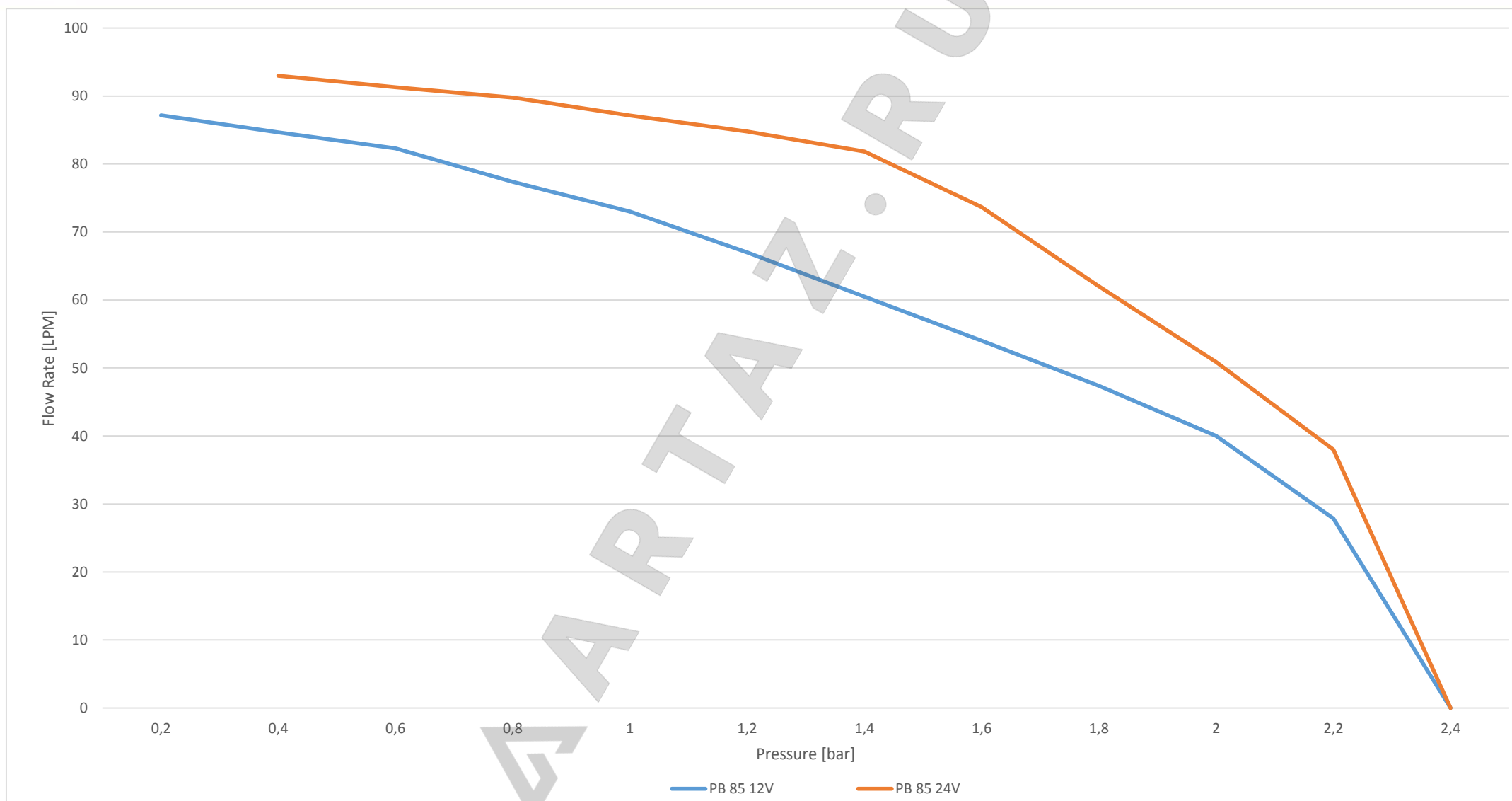
documento / document

prodotto / product

MADE IN ITALY

curva di portata / flow rate curve

# PB 85



Adam Pumps spa  
via della Resistenza 46/48  
41011 Campogalliano (MO) - ITALIA

tel. +39 059 528 128  
fax +39 059 528 437  
[info@adampumps.com](mailto:info@adampumps.com)